

# MAPPING ST. LOUIS' DEMOGRAPHIC FUTURE

---

**Ness Sandoval**

Professor of Demography and Sociology  
Saint Louis University

April 17, 2025



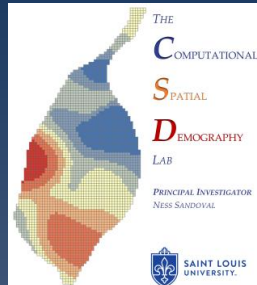
SAINT LOUIS  
UNIVERSITY.

— EST. 1818 —

**DEMOGRAPHY 4 DEMOCRACY**

EMPOWERING TOMORROW'S DREAMERS WITH

KNOWLEDGE TODAY



A panoramic view of the St. Louis skyline. The Gateway Arch is the central focus, a large stainless steel catenary arch. To its left are several tall skyscrapers, including the Wells Fargo Tower. To its right is the Old Courthouse and the New Center Tower. The foreground shows a mix of urban buildings and greenery. The sky is clear and blue.

## **Four Demographic Hurdles Shaping Population Growth**

- 1. Natural population decline**
- 2. Out-migration of residents**
- 3. Decreasing Black non-Hispanic population**
- 4. Low racial diversity and immigration**

"The fundamental principle of Demography is that demographic transitions are an inevitable aspect of change, persisting irrespective of whether individuals recognize, acknowledge, or accept the underlying demographic realities and trends."

[illegible]

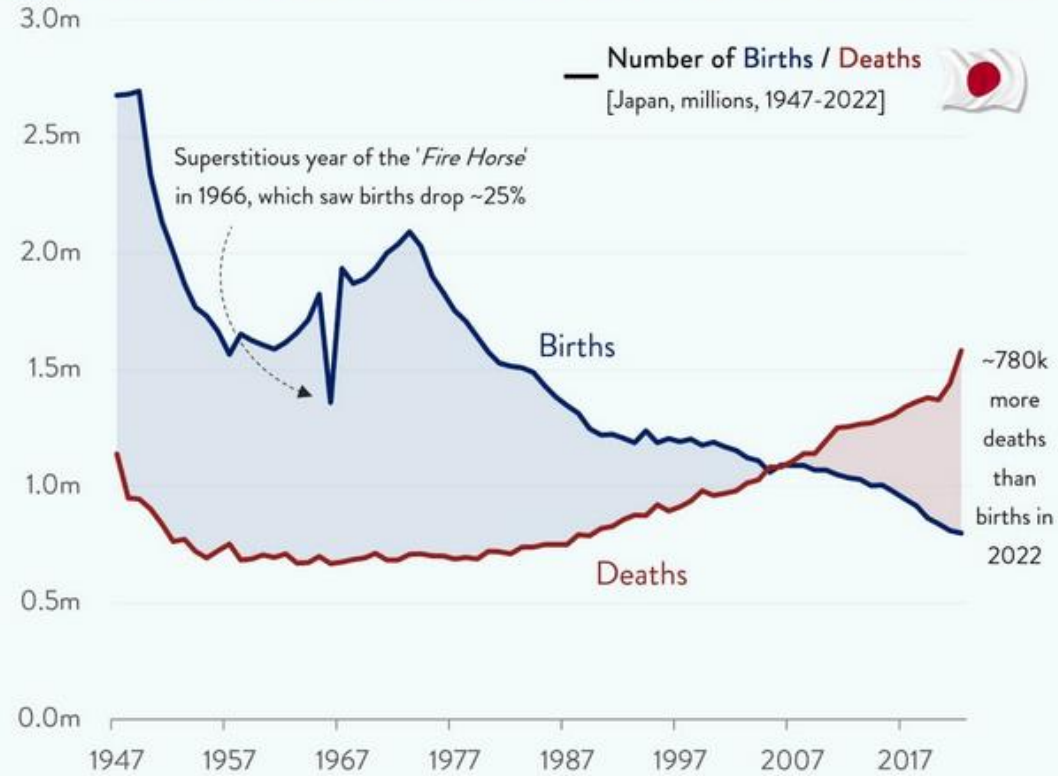
A map of St. Louis County, Missouri, with its constituent municipalities highlighted in dark blue. The municipalities shown are Lincoln, Warren, Franklin, Jefferson, Calhoun, Jersey, Madison, Macoupin, St. Charles, St. Louis (two areas), St. Clair, Bond, Clinton, and Monroe. The map includes major highways such as I-64, I-70, I-55, US-61, US-19, and MO-8. Geographic features like the Mississippi River and the Mays River are also visible. A scale bar indicates 1005 feet. The source information at the bottom reads: "Esri, CGIAR, USGS, County of St. Louis, Missouri DNR, IDNR, Esri, TomTom, Garmin, SafeGraph, FAO, METI/NASA, USGS, EPA, NPS, USFWS".

# 1. MACRO TRENDS

## A. Births and Deaths

# The Birth and Death Trends in the U.S. are Expected

## Japan's Population Problem Grows, As Its Birth Rate Continues To Slide



Source: Ministry of Health,  
Labour and Welfare of Japan

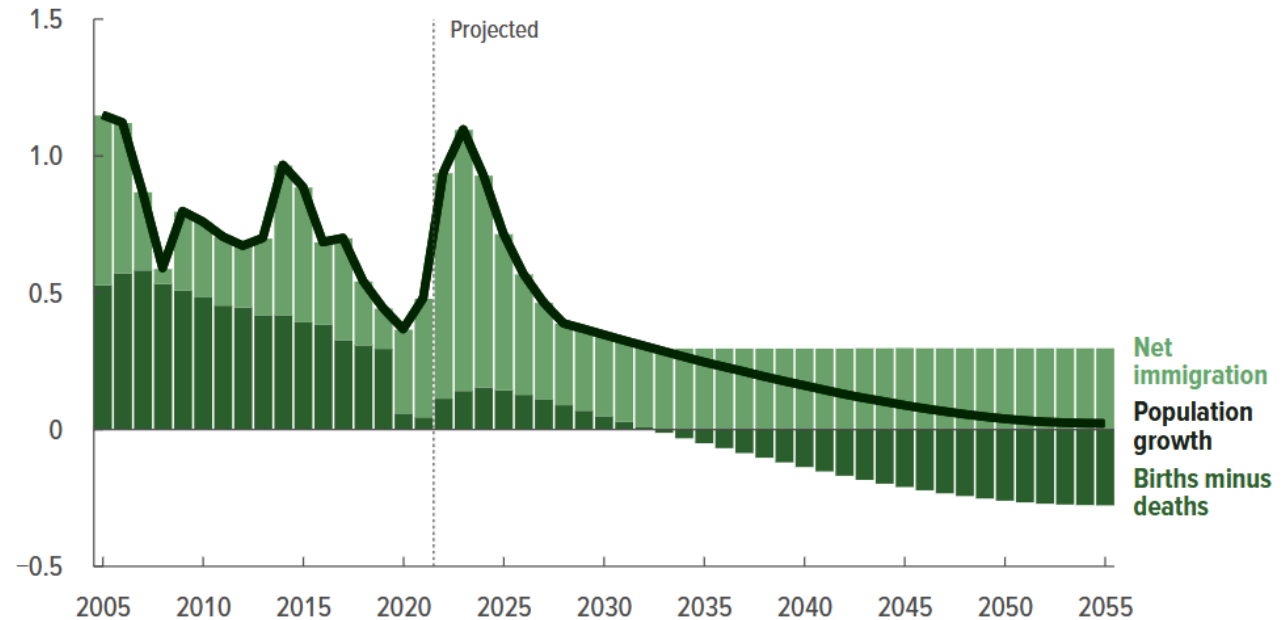
chart*r*



# Immigrants Are The Future A Growing U.S. Economy

**Population Growth and Contributing Factors**

Percent



# U.S. and World Population Clock



## The United States



## The World

Jan 14, 2025 21:26 UTC (+6)

[Learn More](#) | [Download and Share](#)



### U.S. Population

341,201,361



### World Population

8,094,705,172

#### Components of Population Change

21:26:15 UTC

One birth every 9 seconds



One death every 9 seconds



One international migrant (net) every 23 seconds



Net gain of one person every 21 seconds



#### TOP 10 MOST POPULOUS COUNTRIES (July 1, 2024)

1. India	1,409,128,296	6. Nigeria	236,747,130
2. China	1,407,929,929	7. Brazil	220,051,512
3. United States	340,110,988	8. Bangladesh	168,697,184
4. Indonesia	281,562,465	9. Russia	140,820,810
5. Pakistan	252,363,571	10. Mexico	130,739,927



Select a Date

The United States population on **January 13, 2025** was: **341,194,337**

Select a Date

[Learn More](#) | [Download and Share](#)




# U.S. and World Population Clock

 **The United States**


 **The World**

Apr 02, 2025 20:30 UTC (Eastern+5)

[Learn More](#) | [Download and Share](#)

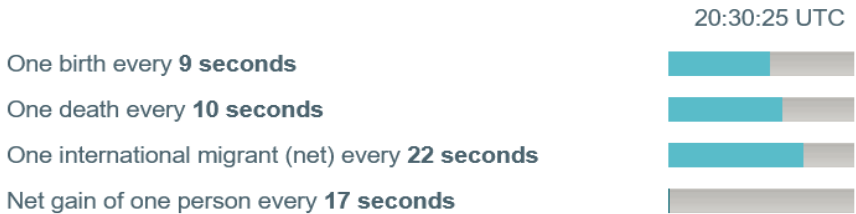
 **U.S. Population**  

341,562,658

 **World Population**  

8,109,920,401

### Components of Population Change



### TOP 10 MOST POPULOUS COUNTRIES (July 1, 2025)

1. India	1,419,316,933	6. Nigeria	242,794,751
2. China	1,407,181,209	7. Brazil	221,359,387
3. United States	342,034,432	8. Bangladesh	170,183,916
4. Indonesia	283,587,097	9. Russia	140,134,279
5. Pakistan	257,047,044	10. Mexico	131,741,347

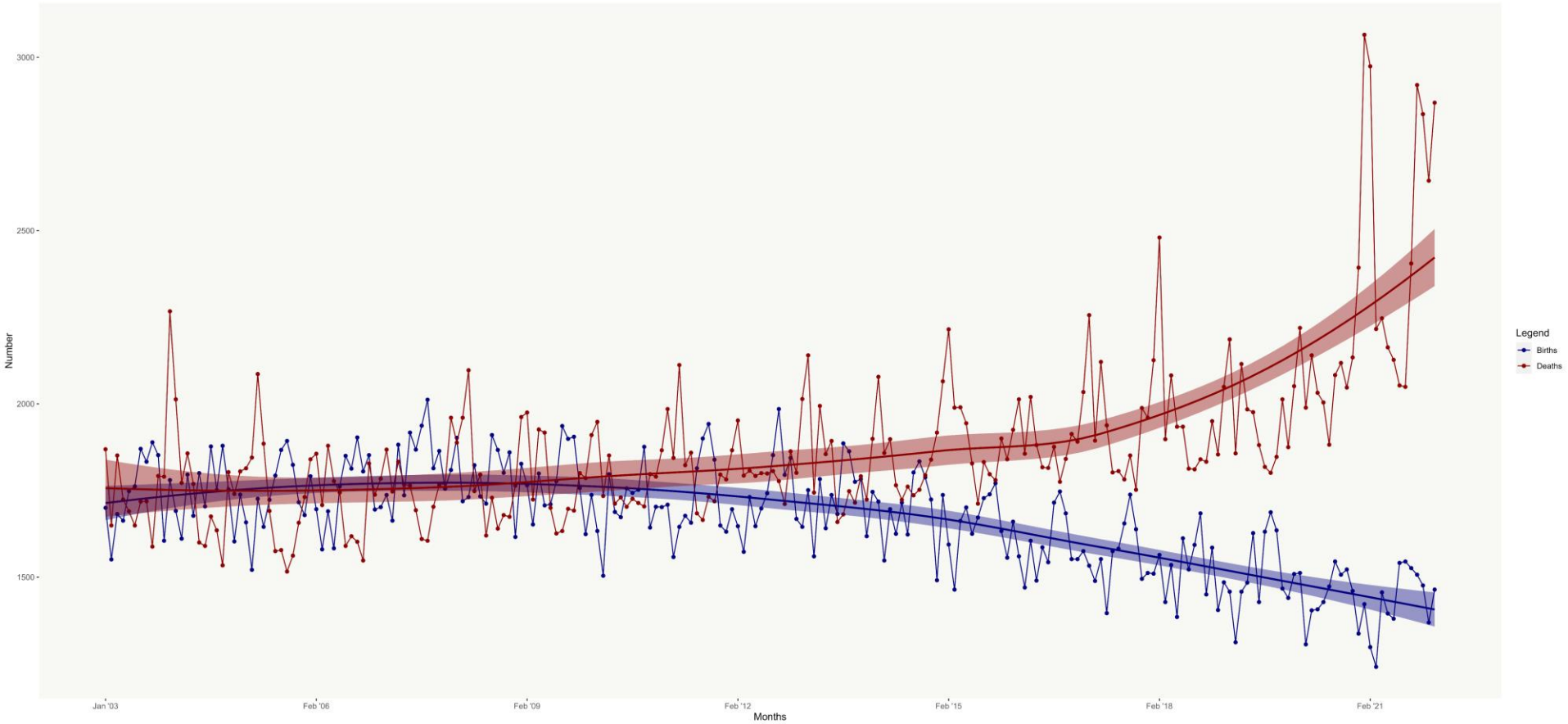
  
Select a Date

The United States population on **April 1, 2025** was: **341,554,233**

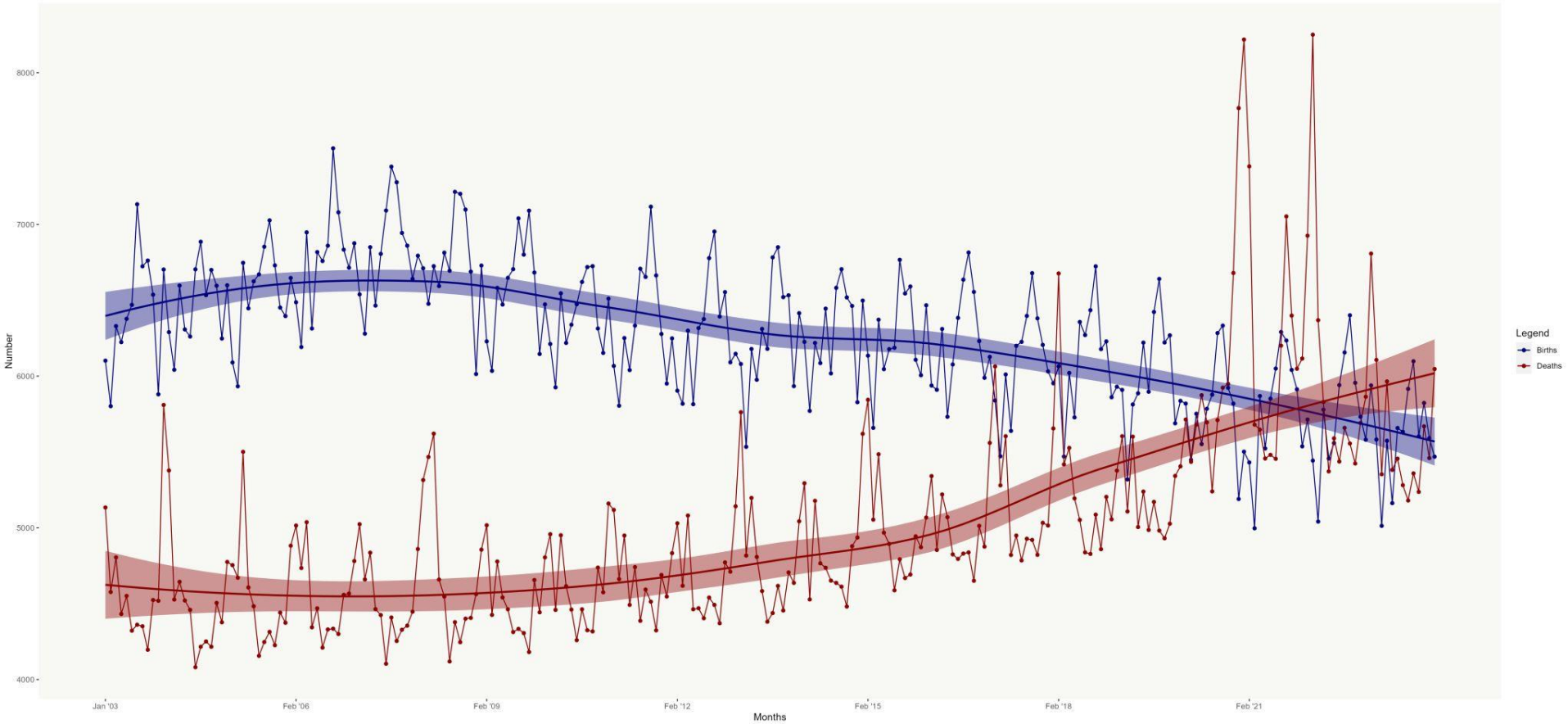
Select a Date 

[Learn More](#) | [Download and Share](#)

West Virginia  
Births and Deaths



Missouri  
Births and Deaths

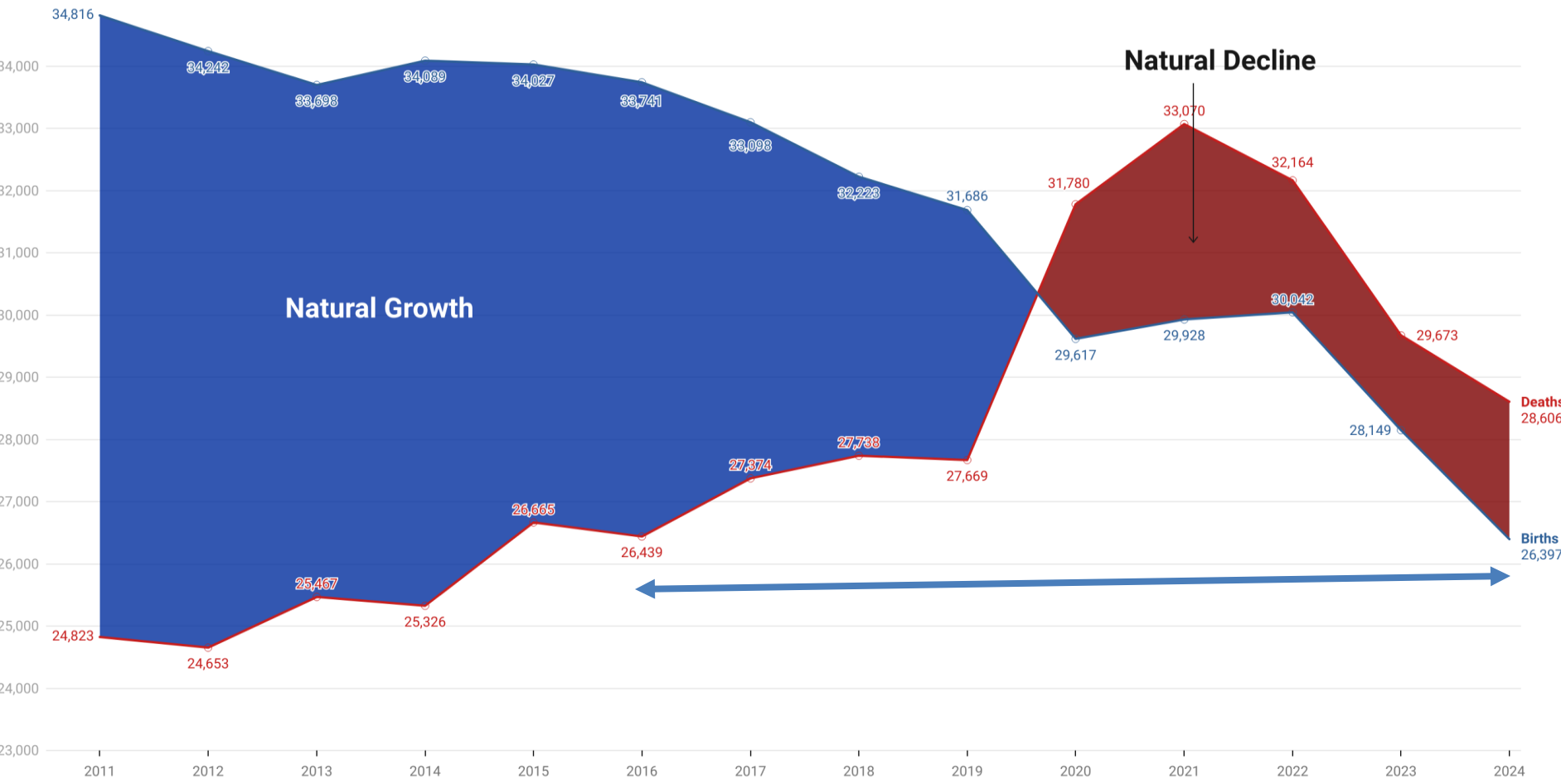


# Analyzing Birth and Death Trends in Missouri

Year	2007	2023	Change	Percent Change	
Births	81,930	67,065	-14,865	<div></div>	<div>-18.1%</div>
Deaths	54,166	66,495	123,298	<div></div>	<div>22.7%</div>
Natural Change	27,764	570	NA	NA	

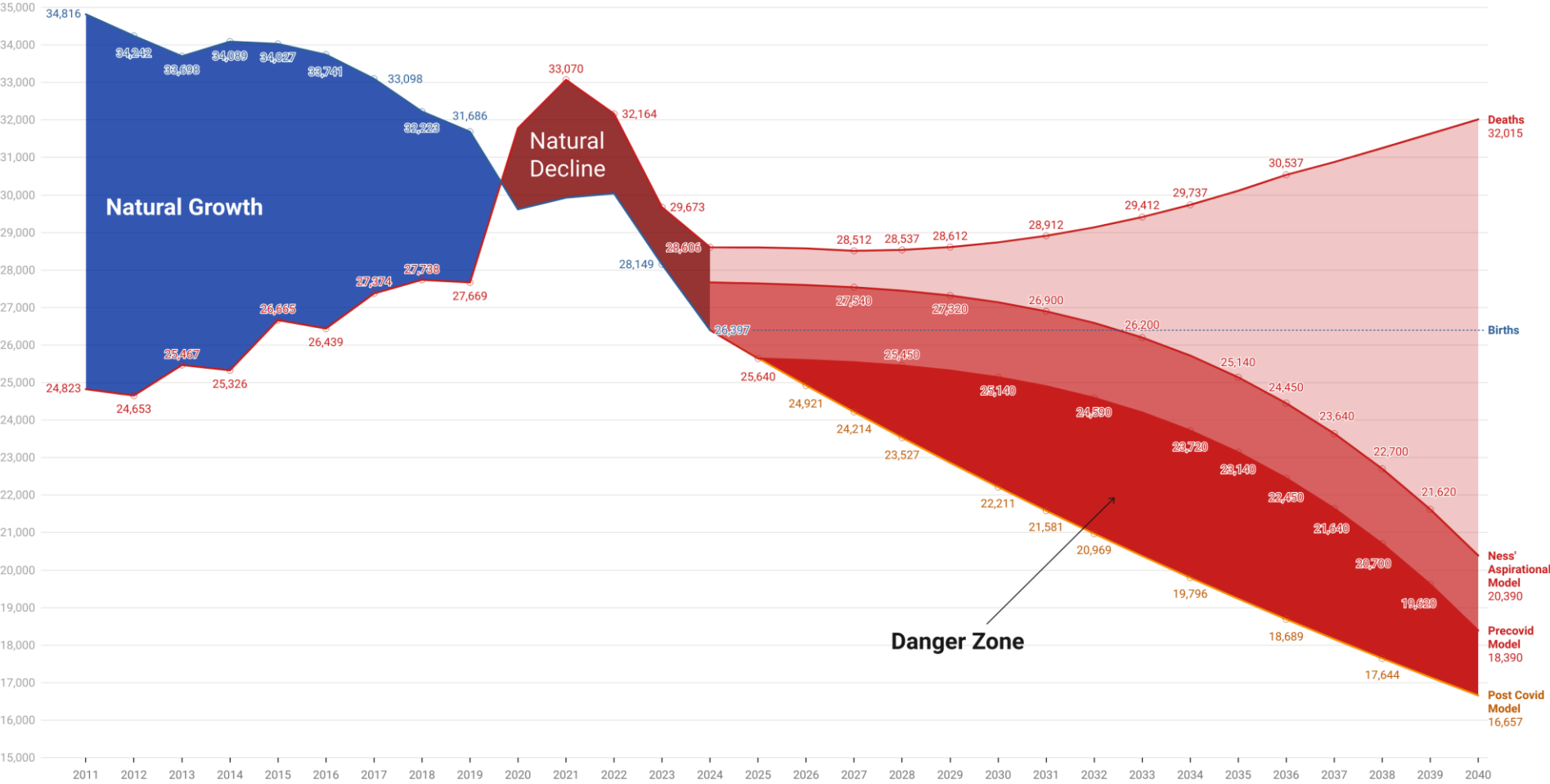
Table: J.S. Onésimo Sandoval, Saint Louis Univesity • Source: CDC Wonder and 2023 Provisional Vital Statistics for Missouri • Created with Datawrapper

# Trends In Natural Population Growth/Decline Saint Louis MSA



Year data is based on published year estimates from the Population Estimates.  
Chart: J.S. Onésimo Sandoval, Saint Louis University • Source: Annual and Cumulative Estimates of the Components of Resident Population Change for Counties in the United States U.S. Census Bureau, Population Division • Created with Datawrapper

# Potential Future of the Saint Louis MSA



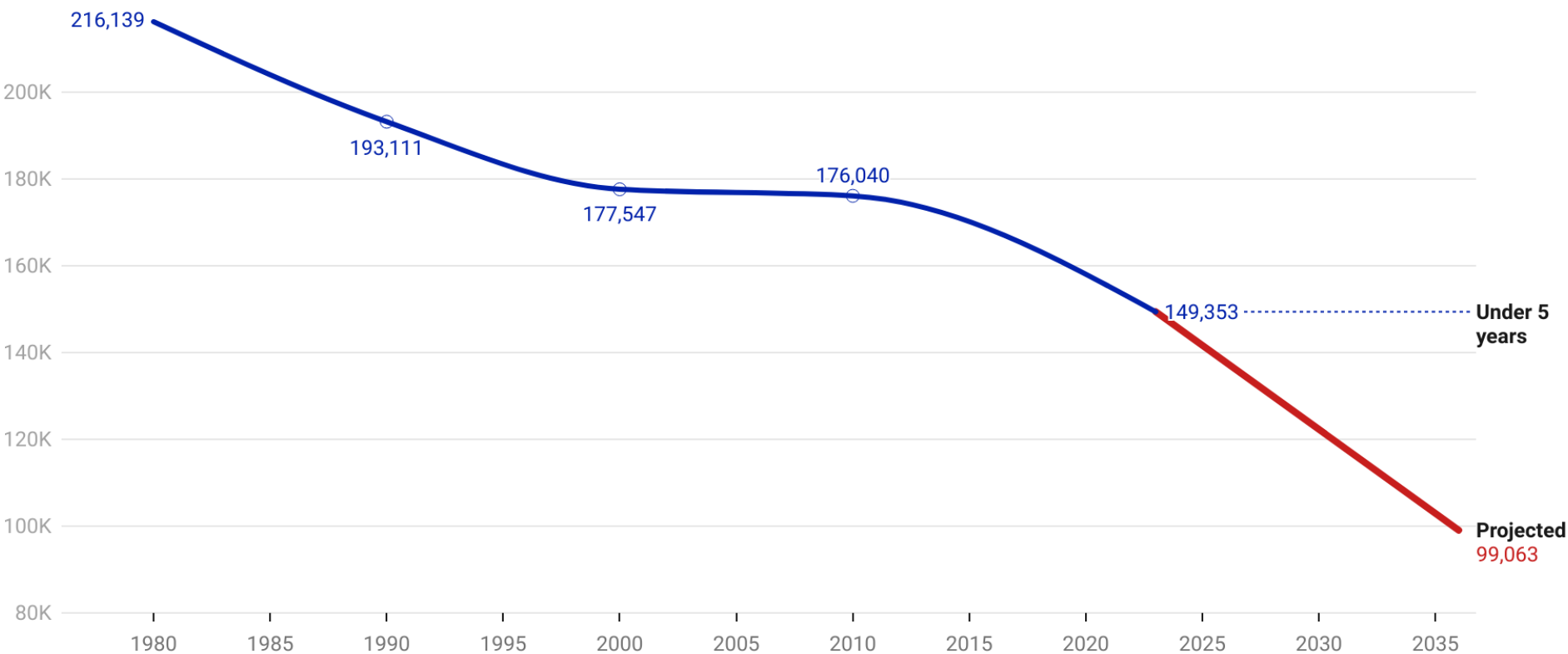
Year data is based on published year estimates from the Population Estimates.

Chart: J.S. Onésimo Sandoval, Saint Louis University • Source: Annual and Cumulative Estimates of the Components of Resident Population Change for Counties in the United States U.S. Census Bureau, Population Division • Created with Datawrapper



# Children Under 5 Years Old in the 15-County St. Louis MSA

The Saint Louis metropolitan area has experienced a significant decline in the number of children under the age of five, with a reduction of 66,786 children between 1980 and 2023. Over this period, the percentage of the total population from this age group has also seen a notable decrease, dropping from 8.7% in 1980 to just 5.3% in 2023.



# Rate of Natural Negative Change, Births and Deaths for the Top 50 Metropolitan Region

Rank	MSA	2024	Births	Birth Rate Per 1000	Deaths	Death Rate Per 1000	Rate of Natural Change
1	Pittsburgh, PA Metro Area	2,429,917	21,597	8.89	29,203	12.02	-3.13
2	Tampa-St. Petersburg-Clearwater, FL Metro Area	3,424,560	31,402	9.17	34,582	10.10	-0.93
3	St. Louis, MO-IL Metro Area	2,811,927	26,397	9.39	28,606	10.17	-0.79
4	Cleveland, OH Metro Area	2,171,877	21,481	9.89	23,183	10.67	-0.78
5	Providence-Warwick, RI-MA Metro Area	1,700,901	15,139	8.90	16,319	9.59	-0.69
6	Hartford-West Hartford-East Hartford, CT Metro Area	1,169,048	10,674	9.13	10,939	9.36	-0.23

## 2. FIVE DECADES OF QUESTIONABLE GROWTH

Population Comparison for Selected MSAs in the U.S.

MSA		1970	2010	2020	Change (1970-2020)	▼ Percent Change (1970-2020)
1	Austin Metro Area	295,516	1,716,236	2,283,371	1,987,855	673%
2	Charlotte Metro Area	409,370	2,243,627	2,660,329	2,250,959	550%
3	Orlando Metro Area	428,003	2,134,410	2,673,376	2,245,373	525%
4	Dallas Metro Area	1,555,950	6,366,543	7,637,387	6,081,437	391%
5	Atlanta Metro Area	1,390,164	5,286,699	6,089,815	4,699,651	338%
6	Nashville Metro Area	541,108	1,646,200	1,989,519	1,448,411	268%
7	Denver Metro Area	1,227,529	2,543,465	2,963,821	1,736,292	141%
8	Oklahoma City Metro Area	640,889	1,252,988	1,425,695	784,806	122%
9	Minneapolis Metro Area	1,813,647	3,333,653	3,690,261	1,876,614	103%
10	Indianapolis Metro Area	1,109,882	1,887,877	2,111,040	1,001,158	90%
11	Kansas City Metro Area	1,253,916	2,009,342	2,192,035	938,119	75%
12	Memphis Metro Area	770,120	1,316,102	1,337,779	567,659	74%
13	Cincinnati Metro Area	1,384,851	2,137,666	2,256,884	872,033	63%
14	St. Louis Metro Area 1970 7 County Boundary	2,363,017	2,787,701	2,820,253	457,236	19%
15	St. Louis Metro Area 2024 15 County Boundary	2,520,639	2,787,701	2,820,253	299,614	12%
16	Cleveland Metro Area	2,064,194	2,077,260	2,088,251	24,057	1%
17	Pittsburgh Metro Area	2,401,245	2,356,315	2,370,930	-30,315	-1%

San Antonio will be larger than the Saint Louis MSA and Austin has the population momentum to continue to grow and be larger than the Saint Louis MSA.

2024 Population Estimates - Regions that could be larger than Saint Louis

	MSA	2024 Population Esimates	Behind Saint Louis MSA	Population Change (2023-2024)
1	St. Louis	2,811,927		6,420
2	San Antonio	2,763,006	48,921	47,297
3	Austin	2,550,637	261,290	58,019
4	Portland	2,537,904	274,023	16,236
5	Sacramento	2,463,127	348,800	28,663
6	Las Vegas	2,398,871	413,056	44,586
7	Cincinnati	2,302,815	509,112	20,191
8	Kansas City	2,253,579	558,348	24,817
9	Columbus	2,225,377	586,550	30,348
10	Indianapolis	2,174,833	637,094	26,661
11	Nashville	2,150,553	661,374	36,567

Table: J.S. Onésimo Sandoval, Saint Louis University • Source: U.S. Census - 2024 Population Estimates • Created with Datawrapper

Saint Louis has Net Positive Migration

# Saint Louis MSA - Population Estimates of Migration

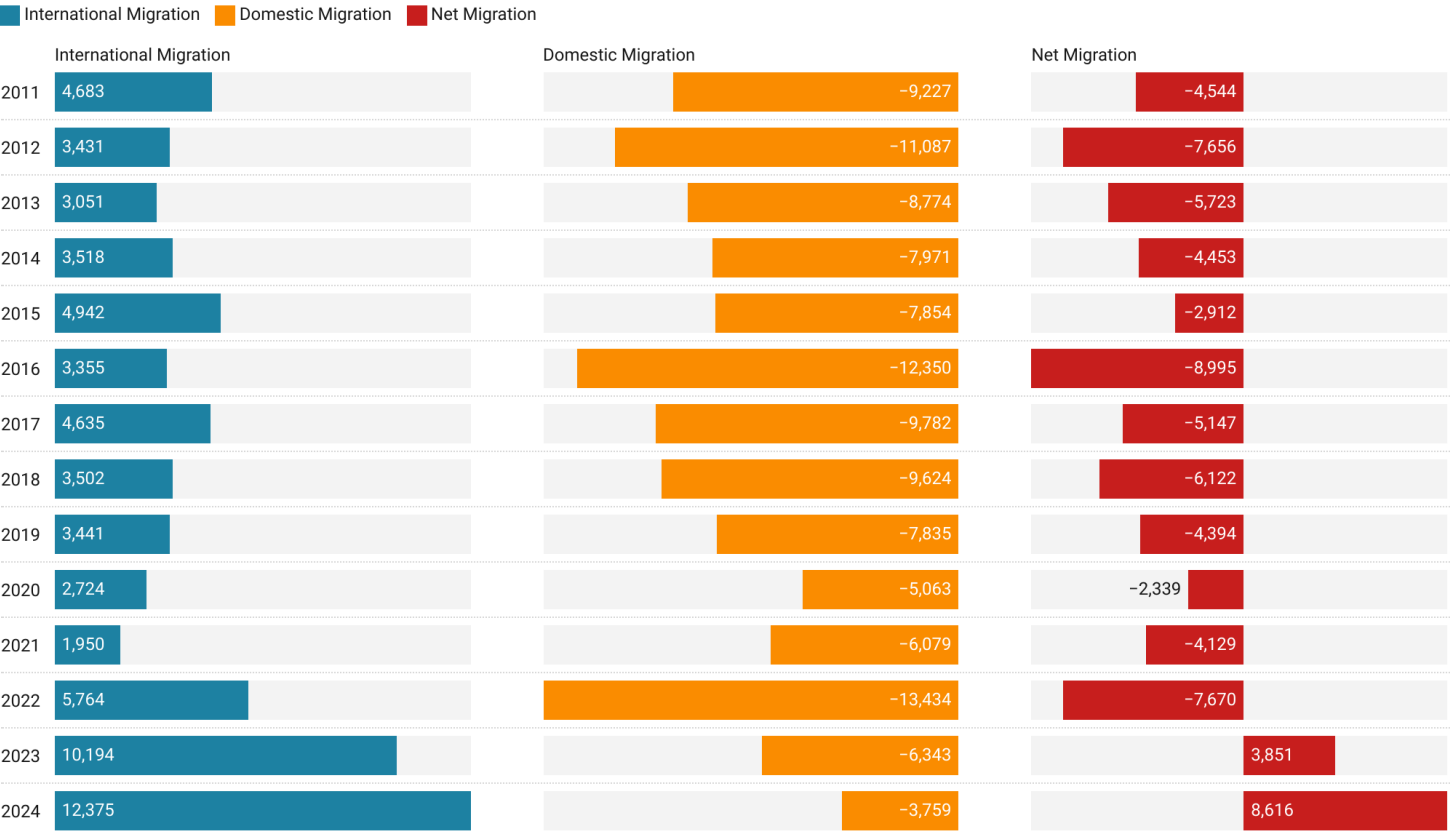


Chart Created by J.S. Onésimo Sandoval, Saint Louis University.  
Chart: J.S. Onésimo Sandoval, Saint Louis University • Source: Annual and Cumulative Estimates of the Components of Resident Population Change for Counties in the United States: April 1, 2023 to July 1, 2024, U.S. Census Bureau, Population Division • Created with Datawrapper



# St. Louis MSA Trails Peer Cities in Housing Permit Approvals

## Housing Permits by MSA

The Building Permits Survey (BPS) provides national, state, and local statistics on new privately-owned residential construction.

	MSA	MSA Rank	2024 Population	2021	2022	2023	2024	Total ▼	Housing Per 1000 Residents
1	Austin-Round Rock-Georgetown, TX	25	2,550,637	50,907	42,362	38,773	32,304	164,346	64
2	Nashville-Davidson--Murfreesboro--Franklin, TN	35	2,150,553	32,191	28,314	23,558	19,947	104,010	48
3	San Antonio-New Braunfels, TX	24	2,763,006	22,264	24,336	16,485	14,776	77,861	28
4	Indianapolis-Carmel-Anderson, IN	33	2,174,833	13,451	13,533	12,554	11,890	51,428	24
5	Portland-Vancouver-Hillsboro, OR-WA	26	2,537,904	15,023	12,978	11,382	9,129	48,512	19
6	Sacramento-Roseville-Folsom, CA	27	2,463,127	12,434	10,800	11,941	11,518	46,693	19
7	Kansas City, MO-KS	31	2,253,579	11,254	11,213	7,514	9,337	39,318	17
8	St. Louis, MO-IL	23	2,811,927	8,326	9,130	7,107	6,691	31,254	11

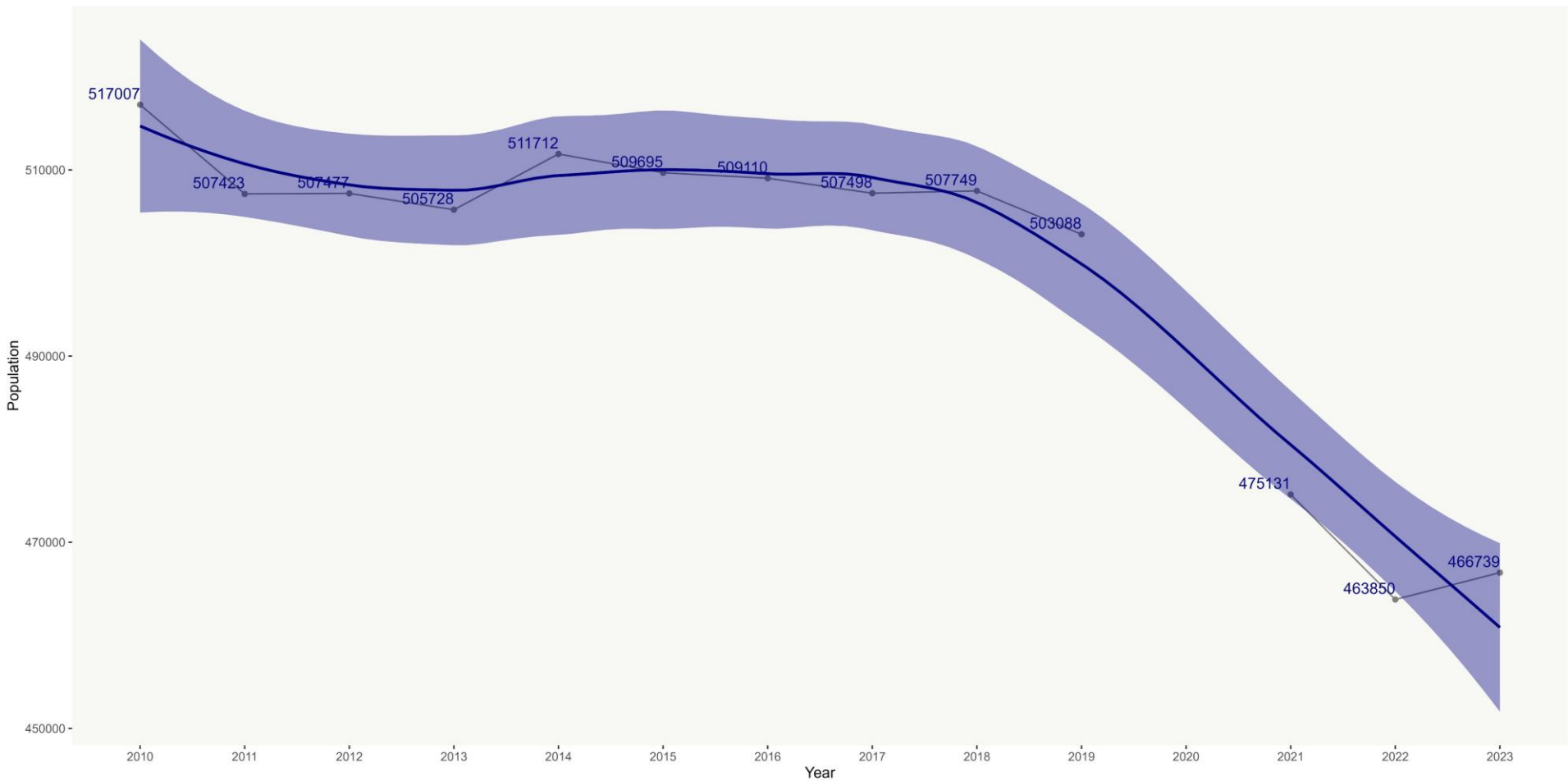
2024 Housing Permits Ranking for Top 50 MSA Regional

Rank	MSA	Single Family	Multi-Famiily	Total
40	Detroit-Warren-Dearborn, MI	4,866	2,580	7,446
41	McAllen-Edinburg-Mission, TX	4,391	2,987	7,378
42	Omaha-Council Bluffs, NE-IA	3,524	3,690	7,214
43	Ocala, FL	6,409	662	7,071
44	Cincinnati, OH-KY-IN	3,958	3,046	7,004
45	Knoxville, TN	4,801	2,200	7,001
46	Oklahoma City, OK	5,880	1,016	6,896
47	St. Louis, MO-IL	4,653	2,038	6,691
48	Provo-Orem, UT	5,242	1,191	6,433
49	Baltimore-Columbia-Towson, MD	3,812	2,435	6,247
50	Deltona-Daytona Beach-Ormond Beach, FL	5,085	905	5,990

### **3. SECOND LARGEST BLACK POPULATIONS LOSS IN THE U.S.**

# Saint Louis MSA

## Population Trend - Black (Non-Hispanic)



## 4. DEMOGRAPHIC TRANSITIONS IN THE SAINT LOUIS MSA

### **Deaths and Births**

# Saint Louis MSA 2024 Population Estimates by County

The entire population growth in the Saint Louis MSA region, from 2023 to 2024, which totals 6,420 people, is attributed solely to international migration. This means that the increase in population during this period is entirely the result of people moving into the region from other countries, with no contribution from domestic migration or natural population growth.

State	County	Population 2024	2024 Population Change	2024 Natural Change	2024 Net Migration
MSA	Saint Louis MSA Total	2,811,927	6,420 ▲	-2,209	8,616
MO	St. Louis city, Missouri	279,695	-3,077	173	-3,229
IL	St. Clair County, Illinois	251,149	-945	-678	-268
IL	Madison County, Illinois	263,017	-425	-842	419
IL	Macoupin County, Illinois	43,895	-232	-302	71
IL	Monroe County, Illinois	34,969	-175	-209	36
IL	Calhoun County, Illinois	4,224	-69	-47	-22
IL	Bond County, Illinois	16,576	-61	-83	22
IL	Jersey County, Illinois	21,150	-8	-131	123
IL	Clinton County, Illinois	37,087	201	18	185
MO	Warren County, Missouri	38,478	663	41	620
MO	Jefferson County, Missouri	231,888	733	-227	953
MO	Franklin County, Missouri	107,256	812	-193	1,005
MO	Lincoln County, Missouri	65,888	1,181	192	987
MO	St. Louis County, Missouri	992,929	2,054	-620	2,644
MO	St. Charles County, Missouri	423,726	5,768	699	5,070

*Note: The Census reports a residual factor of 13 for the MSA region. The sum of Natural Change and Net Migration totals 6,407. The largest residuals were recorded for Saint Louis City (-21) and St. Louis County (+30). Overall, these discrepancies are minimal considering the size of the Saint Louis region.*

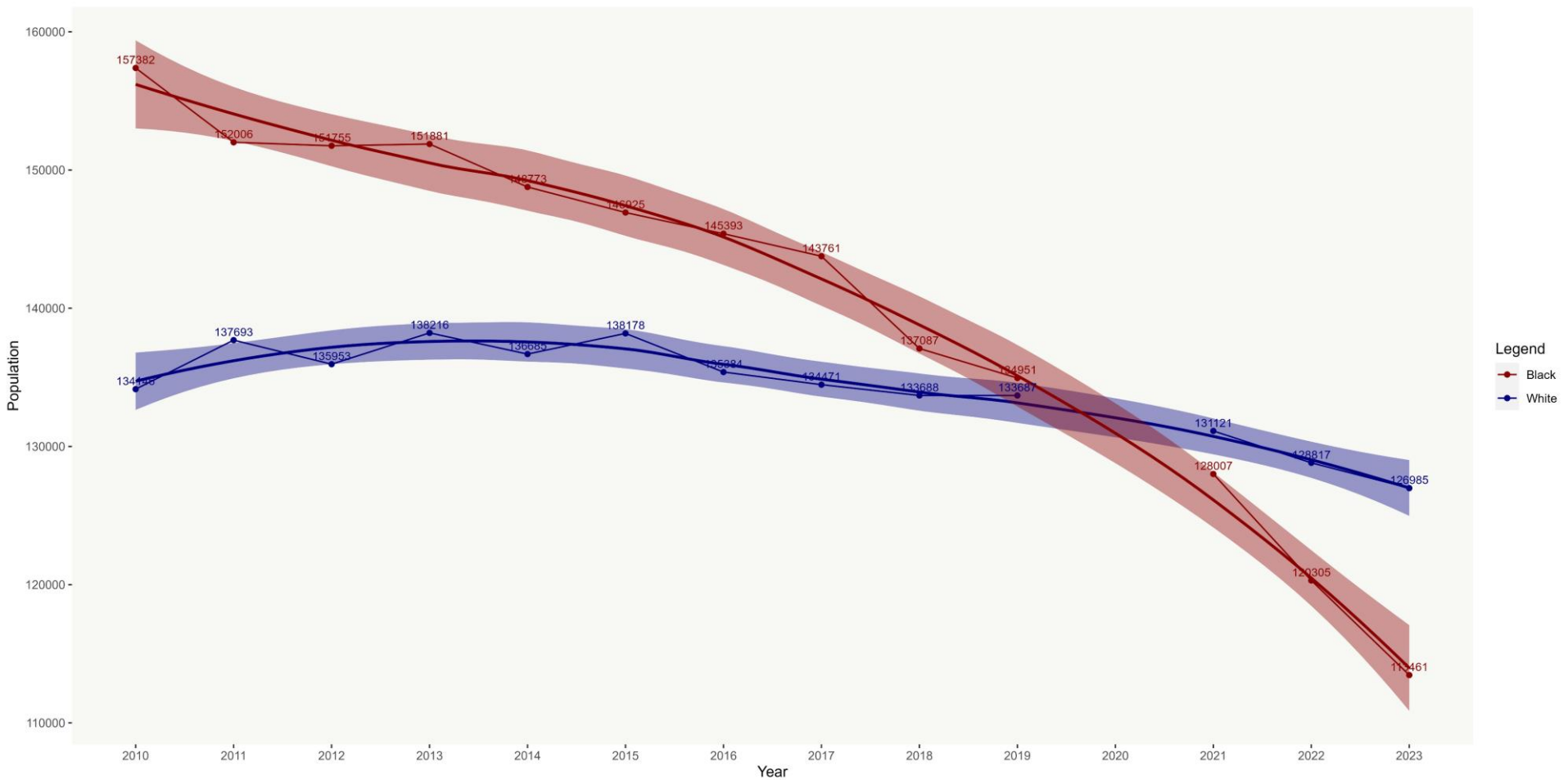


Saint Louis MSA Population Estimates Cumulative Change by County - 2020-2024

State	County	2024 Population Estimate	Population Change	Natural Change	Net Migration
MSA	Saint Louis MSA	2,811,927	-8,920 ▲	-9,884	91
MO	St. Louis city, Missouri	279,695	-21,676	566	-22,225
MO	St. Louis County, Missouri	992,929	-11,572	-4,464	-7,802
IL	St. Clair County, Illinois	251,149	-6,482	-1,818	-4,721
IL	Madison County, Illinois	263,017	-2,955	-3,211	177
IL	Macoupin County, Illinois	43,895	-1,144	-1,127	-16
IL	Jersey County, Illinois	21,150	-363	-533	164
IL	Bond County, Illinois	16,576	-319	-290	-29
IL	Calhoun County, Illinois	4,224	-210	-185	-22
IL	Monroe County, Illinois	34,969	15	-432	452
IL	Clinton County, Illinois	37,087	184	66	105
MO	Franklin County, Missouri	107,256	2,568	-899	3,430
MO	Warren County, Missouri	38,478	2,943	34	2,914
MO	Jefferson County, Missouri	231,888	5,319	-774	5,971
MO	Lincoln County, Missouri	65,888	6,311	825	5,465
MO	St. Charles County, Missouri	423,726	18,461	2,358	16,228

# Saint Louis City

## White and Black Population Trends: ACS 1 Year Estimates



# Since 2019, there has been a decline in Household with Children – About a 93 decline per month

## Change in Households with Children under 18 Years in Saint Louis City (2019-2023)

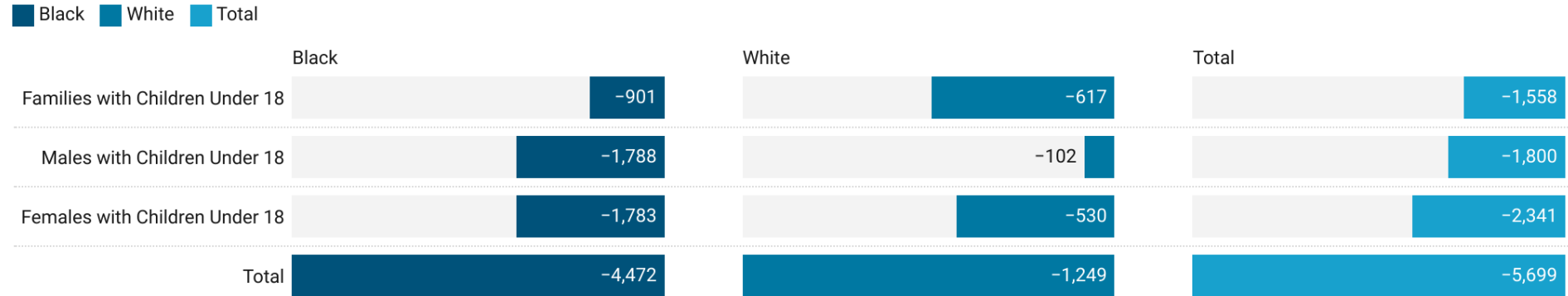


Chart: J.S. Onésimo Sandoval, Saint Louis University • Source: U.S. Census Bureau, 1 ACS Estimates, 2019-2023. • Created with Datawrapper

# Population Growth in Saint Charles, Missouri (2020–2023) Driven by Residents Aged 60 and Over

## Saint Charles, Missouri: Population Change by Age Group

Population Change from April 1, 2020 to July 1, 2023

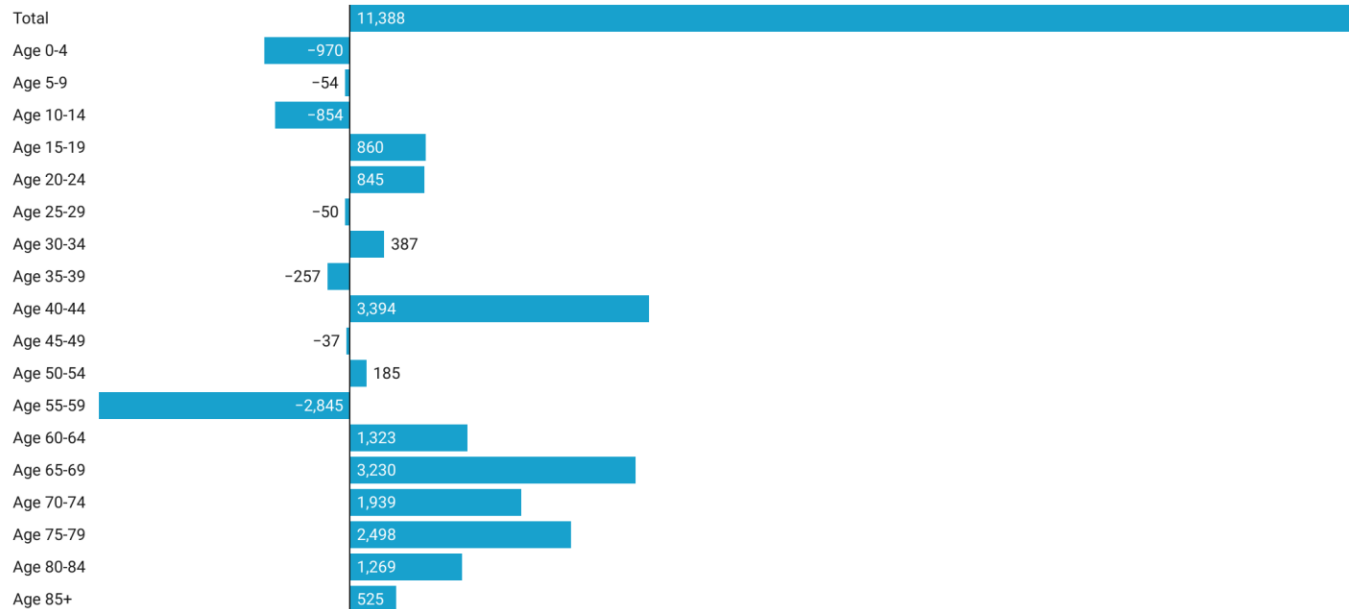


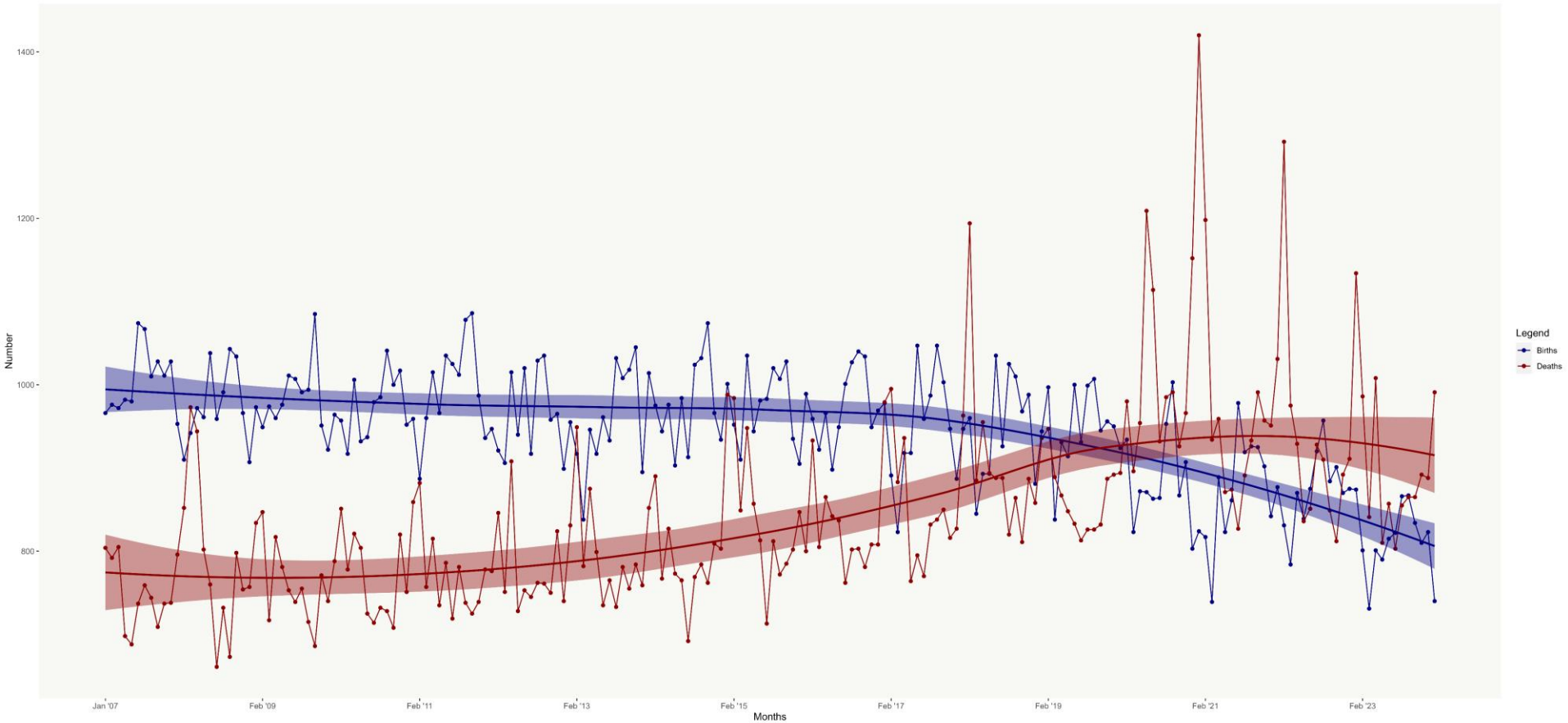
Chart: J.S. Onésimo Sandoval, Saint Louis University • Source: U.S. Population Estimates, Annual County Resident Population Estimates by Age, Sex, Race, and Hispanic Origin: April 1, 2020 to July 1, 2023 • Created with Datawrapper

## 5. COVID-19 WINTER vs. A DEMOGRAPHIC WINTER

**Deaths and Births**

# Saint Louis County Is Entering the First Phase of a Demographic Winter

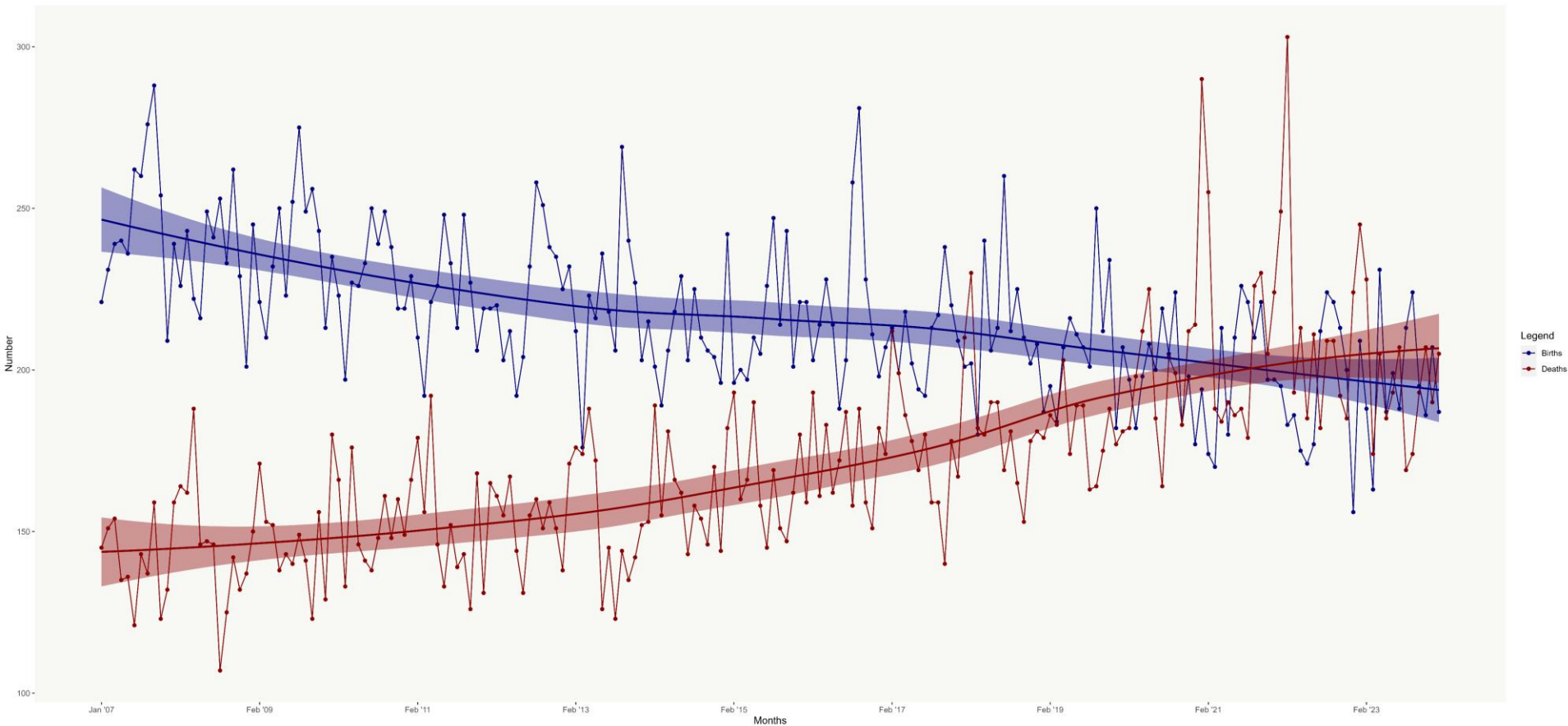
Saint Louis County  
Monthly Birth and Death Trends (2007–2023)





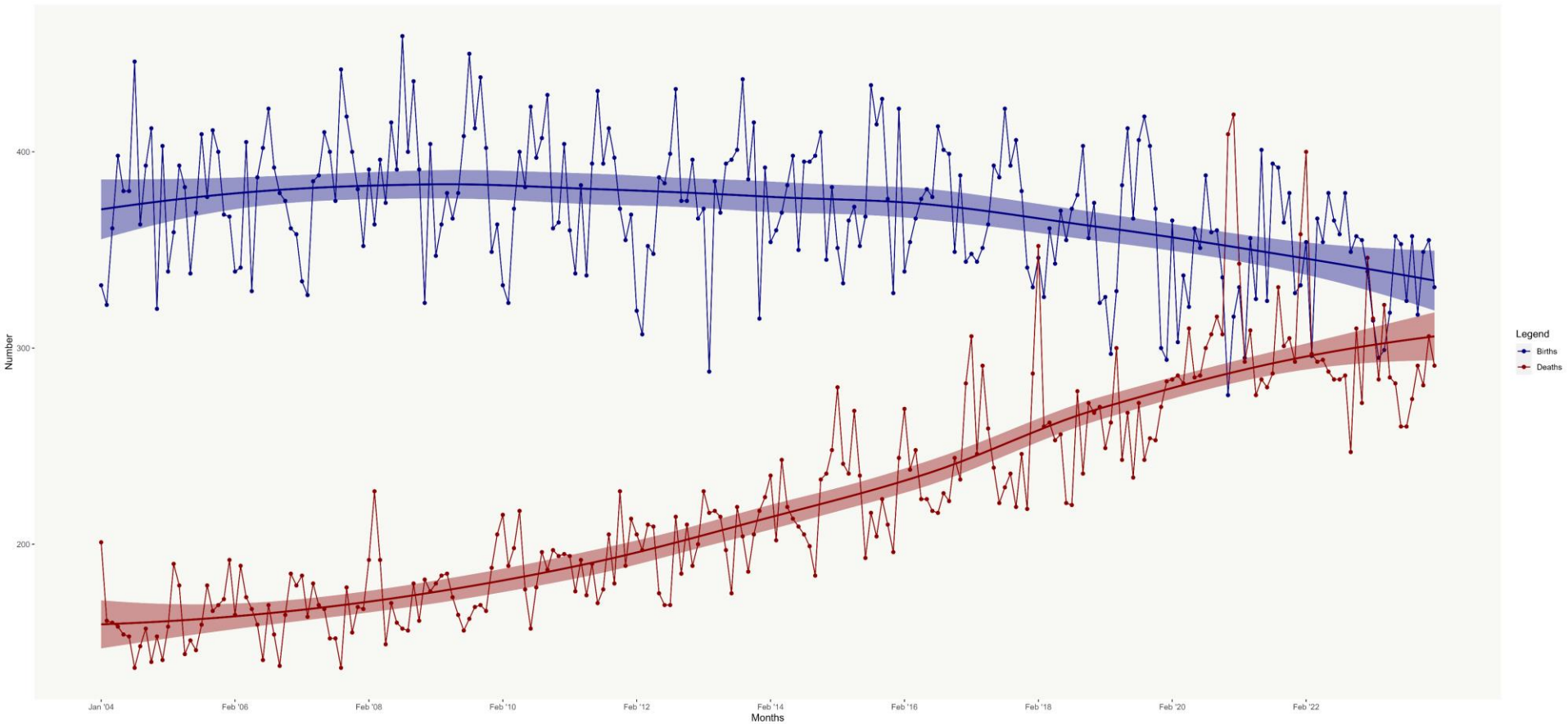
# Jefferson County is Entering the First Phase of a Demographic Winter

Jefferson County  
Monthly Birth and Death Trends (2007–2023)



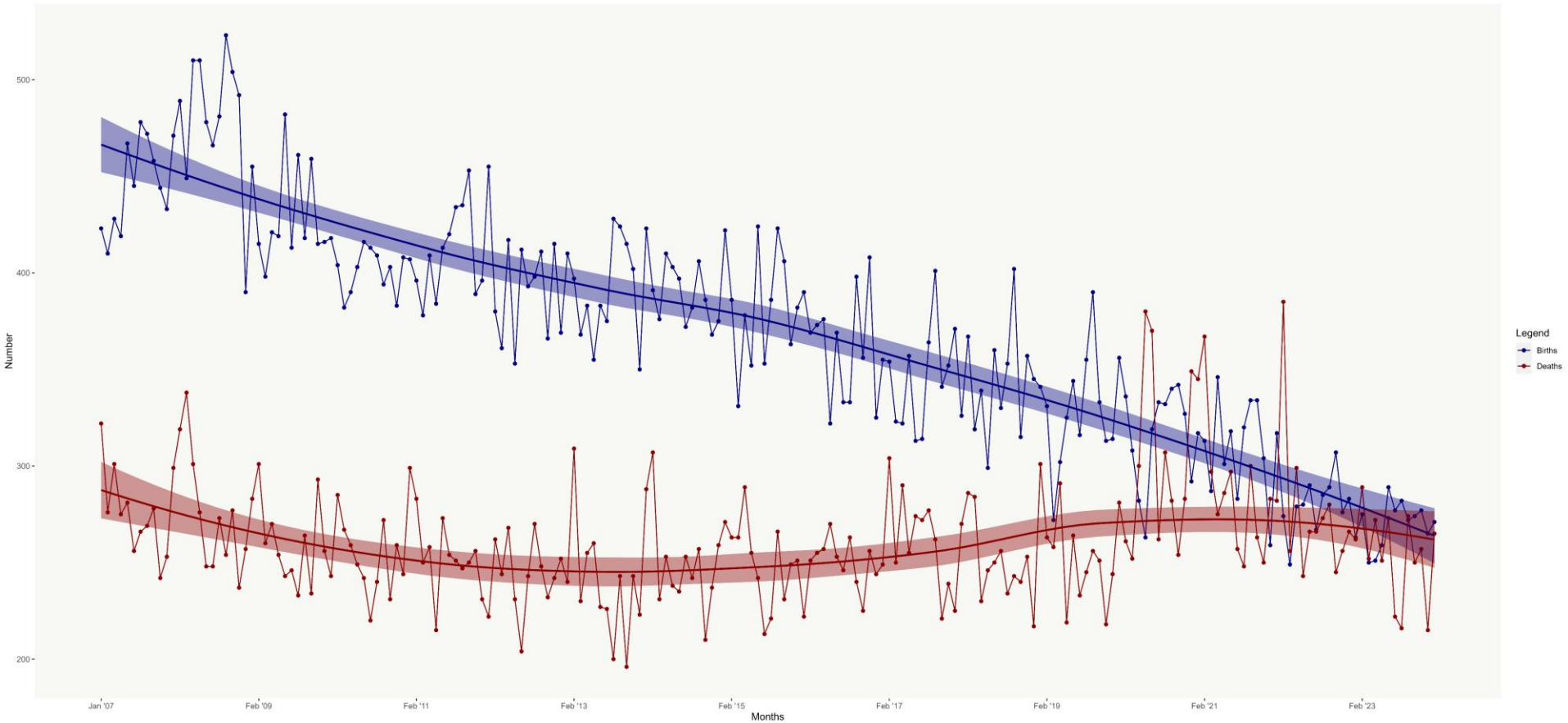
# Saint Charles will Enter in a Demographic Winter

Saint Charles County  
Monthly Birth and Death Trends (2004–2023)



# Saint Louis City will Enter in a Demographic Winter

Saint Louis City  
Monthly Birth and Death Trends (2007–2023)



# 6. DEMOGRAPHIC TRANSITIONS IN SAINT LOUIS CITY AND METROPOLITAN REGION

## **School Aged Residents**

## 'It's a very tight community': St. Simon parents express shock over sudden school closure decision

"It's hard to say who's running the parish at this point," parent Jim Albenesius said.



<https://www.ksdk.com/article/news/local/st-simon-parents-express-shock-over-sudden-school-closure/63-c83095dc-9480-4dd0-8f50-07a2bee01c89>



STLTODAY.COM

### Riverview Gardens could lose a school as enrollment falls

Read breaking news for St. Louis, Missouri, serving the St. Louis metropo...

[Learn more](#)

St. Louis Post-Dispatch  
Yesterday at 9:56 AM · Q

The school district is the first to address post-pandemic enrollment declines throughout the St. Louis region.

[https://www.stltoday.com/news/local/education/riverview-gardens-could-lose-a-school-as-enrollment-falls/article\\_41cb3810-cec2-11ef-a0b6-3712ef902c95.html?fbclid=IwY2xjawHzuL1eHRuA2FibQlXMQABHdVCKyp14JhMhild-90AOIGrJ4RI1rZBVGXIQTrp6UflamMNxpR842cyQ\\_aem\\_pnBj5SHJnxbGASoDsUsLgw](https://www.stltoday.com/news/local/education/riverview-gardens-could-lose-a-school-as-enrollment-falls/article_41cb3810-cec2-11ef-a0b6-3712ef902c95.html?fbclid=IwY2xjawHzuL1eHRuA2FibQlXMQABHdVCKyp14JhMhild-90AOIGrJ4RI1rZBVGXIQTrp6UflamMNxpR842cyQ_aem_pnBj5SHJnxbGASoDsUsLgw)

With deaths exceeding births in Missouri for the third straight year in 2022, schools can expect more empty desks for the foreseeable future.



stltoday.com

[https://www.stltoday.com/news/local/education/school-enrollment-drops-in-kirkwood-amid-falling-birth-rates/article\\_f367fb58-779d-11ea-a12b-9b1439702a90.html#tracking-source=home-top-story](https://www.stltoday.com/news/local/education/school-enrollment-drops-in-kirkwood-amid-falling-birth-rates/article_f367fb58-779d-11ea-a12b-9b1439702a90.html#tracking-source=home-top-story)

Fewer than 120 students are enrolled for the 2024-2025 school year, the archdiocese said.



St. Monica in Creve Coeur becomes latest Catholic school to close because of low enrollment

From stltoday.com

[https://www.stltoday.com/news/local/education/st-monica-in-creve-coeur-becomes-latest-catholic-school-to-close-because-of-low-enrollment/article\\_808ac10e-fe90-11ea-b516-fb4737dafbf6.html?utm\\_medium=social&utm\\_source=twitter-stltoday](https://www.stltoday.com/news/local/education/st-monica-in-creve-coeur-becomes-latest-catholic-school-to-close-because-of-low-enrollment/article_808ac10e-fe90-11ea-b516-fb4737dafbf6.html?utm_medium=social&utm_source=twitter-stltoday)

## Catholic grade school in north St. Louis County to close after 70 years

Our Lady of Guadalupe School teaches children from pre-kindergarten through eighth grade with one class for each grade level.

<https://www.ksdk.com/article/news/education/our-lady-of-guadalupe-school-close-2024-25-school-year/63-700a5adc-22cd-468a-bab5-d87dc5f11222>

## Six questions surrounding Fontbonne University's closure

St. Louis Public Radio | By Sarah Treanor  
Published March 20, 2024 at 10:51 AM CDT



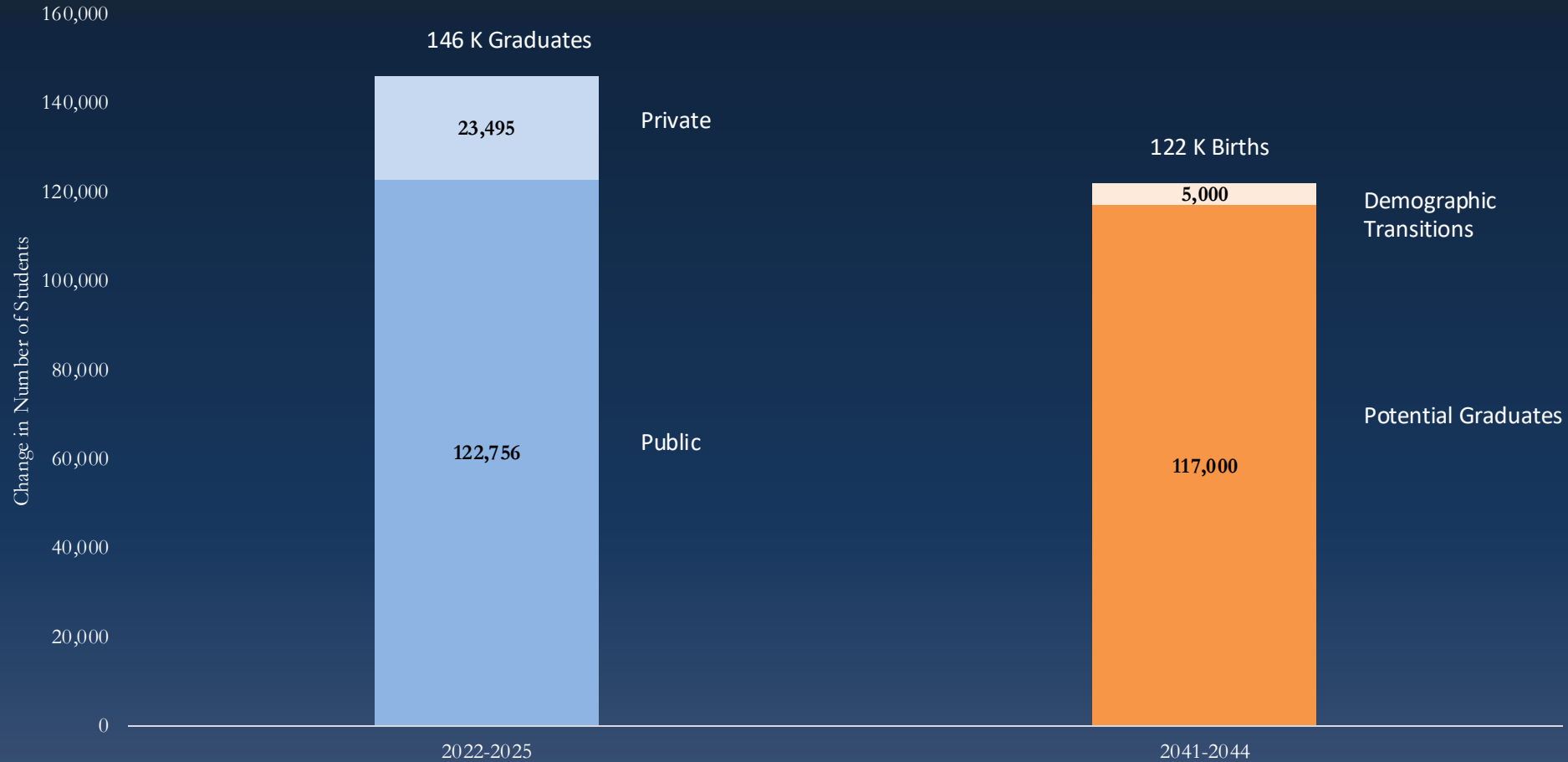
LISTEN · 4:57



A student walks through Fontbonne's campus earlier this month shortly after the university's officials announced that a full-time program would be closed.

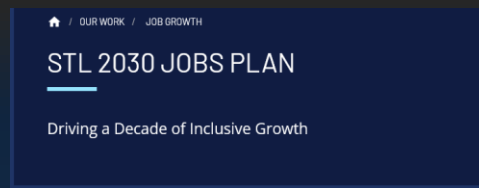
<https://www.stlpr.org/education/2024-03-20/six-questions-surrounding-fontbonne-universitys-closure>

# Saint Louis Metropolitan Region Potential Graduates



## 7. SUCCESS STORIES







## 8. SUMMARY

# Facing the Future: Key Outcomes to Consider

## Part 1

- **Building on Success Stories**
  - Highlight thriving projects and initiatives already in place.
  - Leverage growth drivers like education, innovation, infrastructure, and new amenities.
  - The region needs a culture of “Yes” to housing.



Source of the Image: Justin Barr  
STLFromAbove

# Facing the Future: Key Outcomes to Consider

## Part 2

- **Short-Term Outlook: Reversing the Decline**
  - *Projected Challenge:* MSA population to be the 25<sup>th</sup> largest in the U.S.
  - *Call to Action:* Attract younger families through incentives and urban transformation.
  - *Strategic Priority:* Embrace and drive population diversification for sustainable growth.



## Facing the Future: Key Outcomes to Consider Part 3

- Saint Louis MSA:  
Demographic Hurdles
  - *Natural Population Decline:* Deaths outpacing births.
  - *Community Trends:* Reduction in the Black population.
  - *Migration Dynamics:* Domestic Outmigration of residents — addressing root causes



Thank you!!  
Questions?

Ness Sándoval

[ness.sandoval@slu.edu](mailto:ness.sandoval@slu.edu)



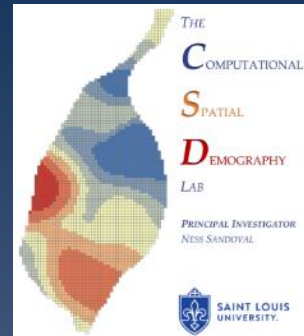
SAINT LOUIS  
UNIVERSITY.

— EST. 1818 —

DEMOGRAPHY 4 DEMOCRACY

EMPOWERING TOMORROW'S DREAMERS WITH

KNOWLEDGE TODAY



Rate of Natural Change, Births and Deaths for the Top 50 Metropolitan Regions - Sorted by Birth Rate

Rank	MSA	2024	Births	Birth Rate Per 1000	Deaths	Death Rate Per 1000	Rate of Natural Change
41	Sacramento-Roseville-Folsom, CA Metro Area	2,463,127	24,066	9.77	19,371	7.86	1.91
42	Los Angeles-Long Beach-Anaheim, CA Metro Area	12,927,614	124,244	9.61	90,857	7.03	2.58
43	Portland-Vancouver-Hillsboro, OR-WA Metro Area	2,537,904	23,933	9.43	20,564	8.10	1.33
44	St. Louis, MO-IL Metro Area	2,811,927	26,397	9.39	28,606	10.17	-0.79
45	San Francisco-Oakland-Fremont, CA Metro Area	4,648,486	43,208	9.30	32,039	6.89	2.40
46	Tampa-St. Petersburg-Clearwater, FL Metro Area	3,424,560	31,402	9.17	34,582	10.10	-0.93
47	Hartford-West Hartford-East Hartford, CT Metro Area	1,169,048	10,674	9.13	10,939	9.36	-0.23
48	San Jose-Sunnyvale-Santa Clara, CA Metro Area	1,995,484	18,149	9.10	11,278	5.65	3.44
49	Providence-Warwick, RI-MA Metro Area	1,700,901	15,139	8.90	16,319	9.59	-0.69
50	Pittsburgh, PA Metro Area	2,429,917	21,597	8.89	29,203	12.02	-3.13



# Rate of Natural Change, Births and Deaths for the Top 50 Metropolitan Regions - Sorted by Death Rate

Rank	MSA	2024	Births	Birth Rate Per 1000	Deaths	Death Rate Per 1000	Rate of Natural Change
1	Pittsburgh, PA Metro Area	2,429,917	21,597	8.89	29,203	12.02	-3.13
2	Birmingham, AL Metro Area	1,192,583	13,644	11.44	13,203	11.07	0.37
3	Cleveland, OH Metro Area	2,171,877	21,481	9.89	23,183	10.67	-0.78
4	Louisville/Jefferson County, KY-IN Metro Area	1,394,234	15,515	11.13	14,651	10.51	0.62
5	St. Louis, MO-IL Metro Area	2,811,927	26,397	9.39	28,606	10.17	-0.79
6	Memphis, TN-MS-AR Metro Area	1,339,345	16,530	12.34	13,544	10.11	2.23
7	Tampa-St. Petersburg-Clearwater, FL Metro Area	3,424,560	31,402	9.17	34,582	10.10	-0.93
8	Detroit-Warren-Dearborn, MI Metro Area	4,400,578	44,736	10.17	42,487	9.65	0.51
9	Providence-Warwick, RI-MA Metro Area	1,700,901	15,139	8.90	16,319	9.59	-0.69
10	Richmond, VA Metro Area	1,370,165	14,886	10.86	12,849	9.38	1.49

## The Saint Louis MSA recorded the highest percentage increase in the foreign-born population among the 30 largest U.S. metropolitan areas.

	MSA	Percent Change Foreign-born ▼
1	St. Louis, MO-IL Metro Area	23.2%
2	Pittsburgh, PA Metro Area	14.9%
3	San Antonio-New Braunfels, TX Metro Area	10.7%
4	Atlanta-Sandy Springs-Alpharetta, GA Metro Area	9.9%
5	Dallas-Fort Worth-Arlington, TX Metro Area	8.2%
6	Charlotte-Concord-Gastonia, NC-SC Metro Area	8.1%
7	Orlando-Kissimmee-Sanford, FL Metro Area	7.9%
8	Detroit-Warren-Dearborn, MI Metro Area	6.4%
9	Houston-The Woodlands-Sugar Land, TX Metro Area	6.0%
10	Baltimore-Columbia-Towson, MD Metro Area	5.9%

Source: U.S. Census Bureau. Table B05001: Nativity and Citizenship Status, 2022-2023 Accessed on September 12, 2024. • Created with Datawrapper



# Percent Foreign-born among Peer MSA regions

The Saint Louis MSA is ranked firs in percent change among the foreign-born population

	MSA	2022	2023	Change	Percent Change ▼
1	St. Louis, MO-IL Metro Area	129,604	159,710	30,106	23.2%
2	Louisville/Jefferson County, KY-IN Metro Area	79,465	92,423	12,958	16.3%
3	Pittsburgh, PA Metro Area	90,993	104,581	13,588	14.9%
4	Nashville-Davidson--Murfreesboro--Franklin, TN Metro Area	179,461	205,057	25,596	14.3%
5	Kansas City, MO-KS Metro Area	149,448	162,505	13,057	8.7%
6	Charlotte-Concord-Gastonia, NC-SC Metro Area	304,613	329,321	24,708	8.1%
7	Orlando-Kissimmee-Sanford, FL Metro Area	572,417	617,434	45,017	7.9%
8	Indianapolis-Carmel-Greenwood, IN Metro Area	189,234	202,571	13,337	7.0%
9	Cleveland, OH Metro Area	121,491	129,618	8,127	6.7%
10	Detroit-Warren-Dearborn, MI Metro Area	447,666	476,525	28,859	6.4%
11	Baltimore-Columbia-Towson, MD Metro Area	326,299	345,485	19,186	5.9%
12	Omaha, NE-IA Metro Area	74,966	78,930	3,964	5.3%
13	Cincinnati, OH-KY-IN Metro Area	125,075	130,704	5,629	4.5%
14	Chicago-Naperville-Elgin, IL-IN Metro Area	1,709,452	1,748,189	38,737	2.3%
15	Oklahoma City, OK Metro Area	115,758	116,490	732	0.6%
16	Dayton-Kettering-Beavercreek, OH Metro Area	36,051	35,709	-342	-0.9%

## Demographic Overview for the U.S.: Racial and Ethnic Composition

Order ▲	Racial/Ethnic Group	2022	2023	Change	Percent Change
1	Total Population	333,287,562	334,914,896	1,627,334	0.5%
2	Hispanic or Latino	63,553,639	65,140,277	1,586,638	2.5%
3	Not Hispanic or Latino	269,733,923	269,774,619	40,696	0.0%
4	White Alone	192,153,076	191,347,640	-805,436	-0.4%
5	Black or African American Alone	39,582,961	39,569,312	-13,649	-0.0%
6	American Indian and Alaska Native Alone	1,750,489	1,733,272	-17,217	-1.0%
7	Asian Alone	19,415,251	19,769,752	354,501	1.8%
8	Native Hawaiian and Other Pacific Islander Alone	590,339	592,077	1,738	0.3%
9	Some Other Race Alone	1,912,680	1,949,065	36,385	1.9%
10	Two or More Races	14,329,127	14,813,501	484,374	3.4%

Table: J.S. Onésimo Sandoval, Saint Louis University • Source: U.S. Census Bureau, 2022 and 2023 1 ACS Estimates. • Created with Datawrapper

Demographic Trends of the Latino Population in the 30 Largest U.S. Metropolitan Areas

Saint Louis is ranked 4th in Percent Latino Population Growth

	MSA	Latino Population 2023	Latino Population Change	Latino Percent Change ▾	Percent Latino 2023
1	Cincinnati, OH-KY-IN Metro Area	103,870	16,176	<div><div>18.4%</div></div>	<div><div>4.6%</div></div>
2	Baltimore-Columbia-Towson, MD Metro Area	235,093	36,273	<div><div>18.2%</div></div>	<div><div>8.3%</div></div>
3	Pittsburgh, PA Metro Area	58,697	8,441	<div><div>16.8%</div></div>	<div><div>2.4%</div></div>
4	St. Louis, MO-IL Metro Area	110,391	13,921	<div><div>14.4%</div></div>	<div><div>3.9%</div></div>
5	Charlotte-Concord-Gastonia, NC-SC Metro Area	353,418	38,077	<div><div>12.1%</div></div>	<div><div>12.6%</div></div>
6	Atlanta-Sandy Springs-Roswell, GA Metro Area	786,696	71,643	<div><div>10.0%</div></div>	<div><div>12.5%</div></div>
7	Minneapolis-St. Paul-Bloomington, MN-WI Metro Area	256,386	21,928	<div><div>9.4%</div></div>	<div><div>6.9%</div></div>
8	Portland-Vancouver-Hillsboro, OR-WA Metro Area	353,697	19,809	<div><div>5.9%</div></div>	<div><div>14.1%</div></div>
9	Seattle-Tacoma-Bellevue, WA Metro Area	478,610	26,662	<div><div>5.9%</div></div>	<div><div>11.8%</div></div>
10	Detroit-Warren-Dearborn, MI Metro Area	232,921	12,720	<div><div>5.8%</div></div>	<div><div>5.4%</div></div>

Table: J.S. Onésimo Sandoval, Saint Louis University • Source: U.S. Census Bureau. "HISPANIC OR LATINO ORIGIN BY RACE." American Community Survey, ACS 1-Year Estimates Detailed Tables, Table B03002, 2022-2023. • Created with Datawrapper